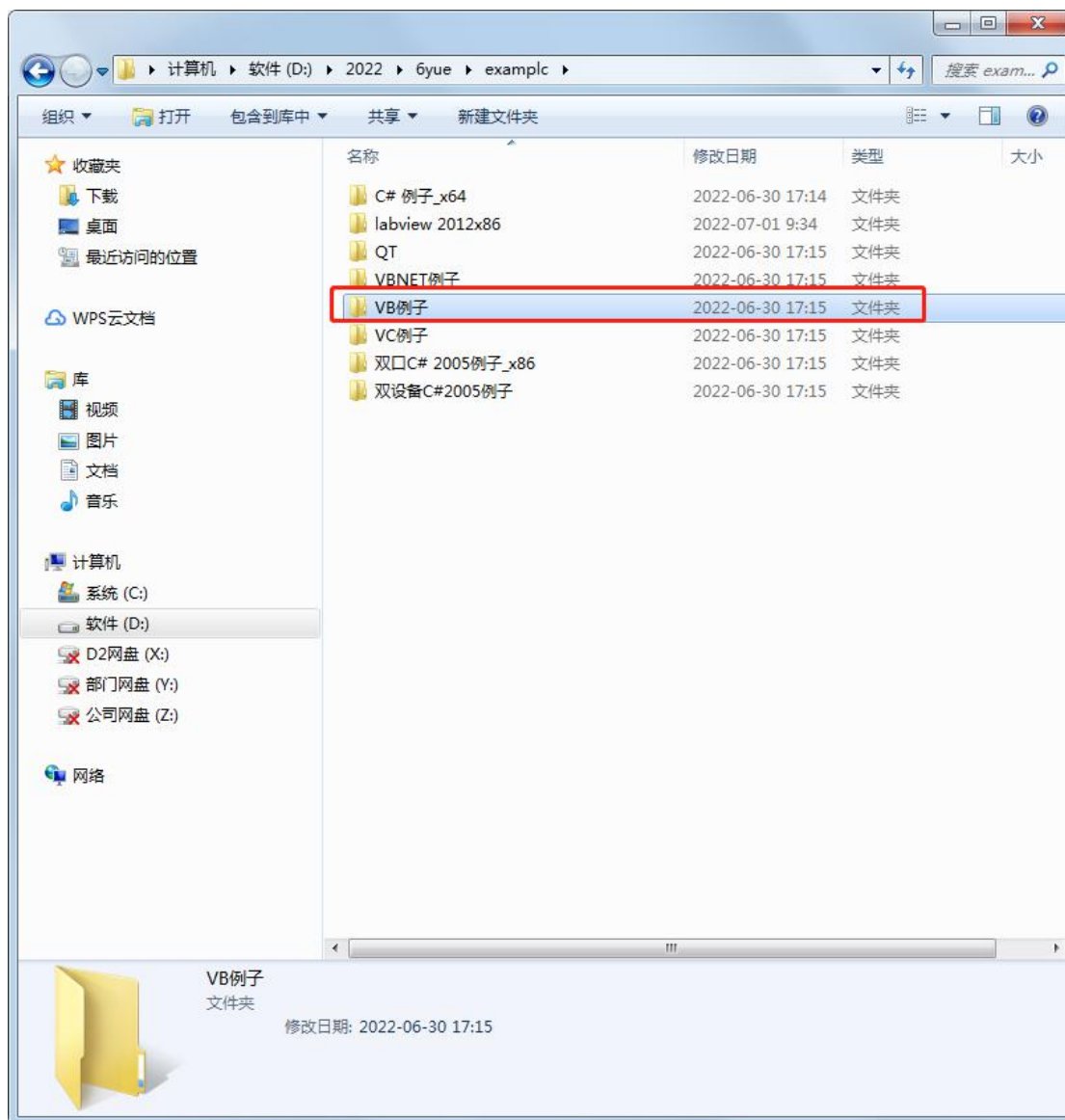


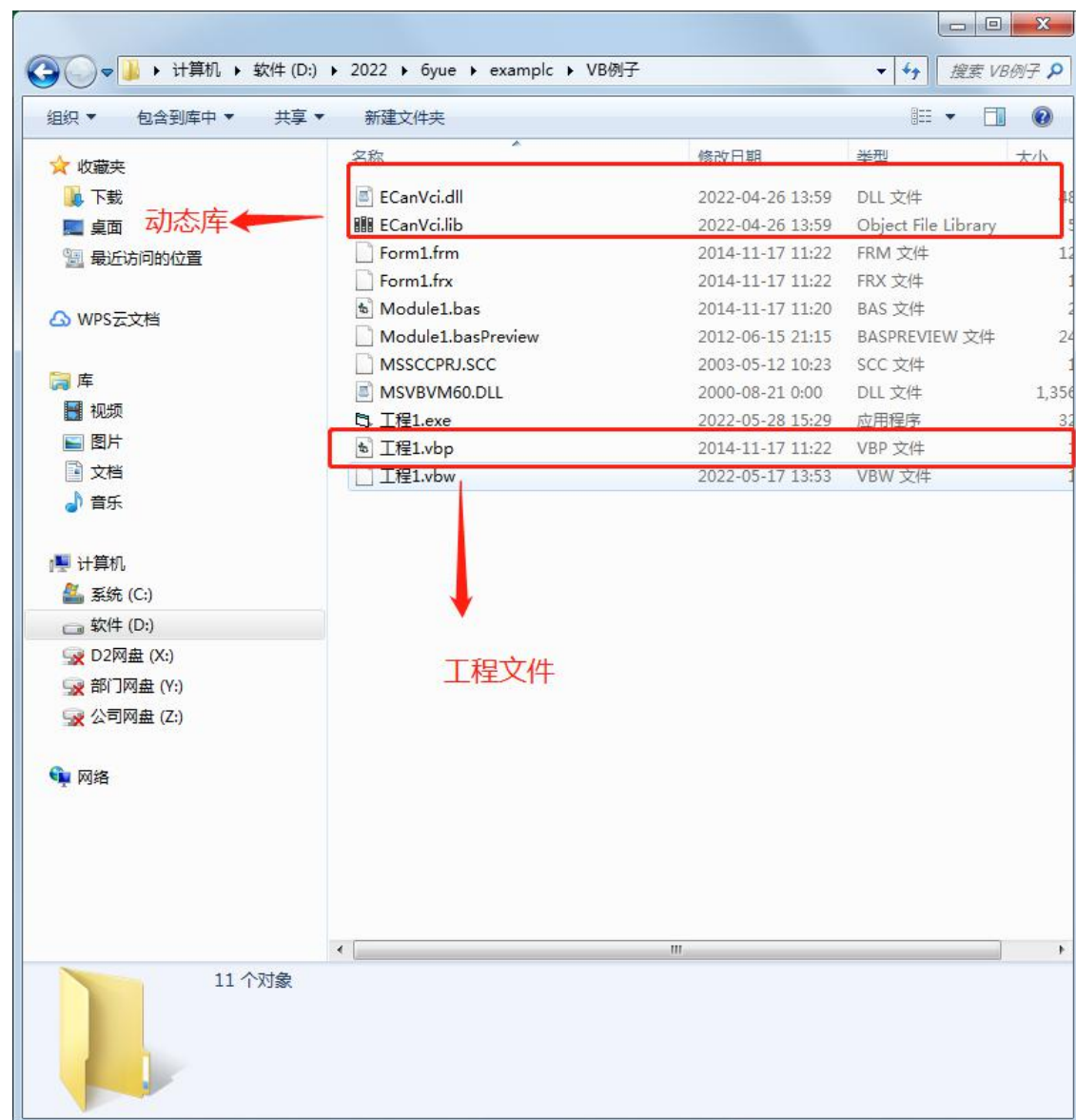
USBCAN VB 例程使用说明

本例程为 x86 框架编写



VB 例程使用说明（使用 VB6.0 打开）

1. 打开工程

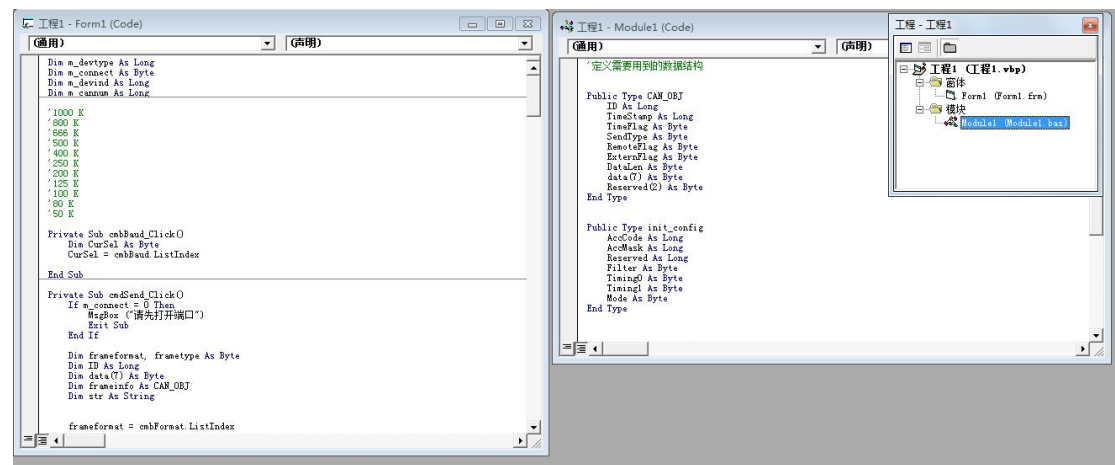


工程 1.vbp 为工程文件

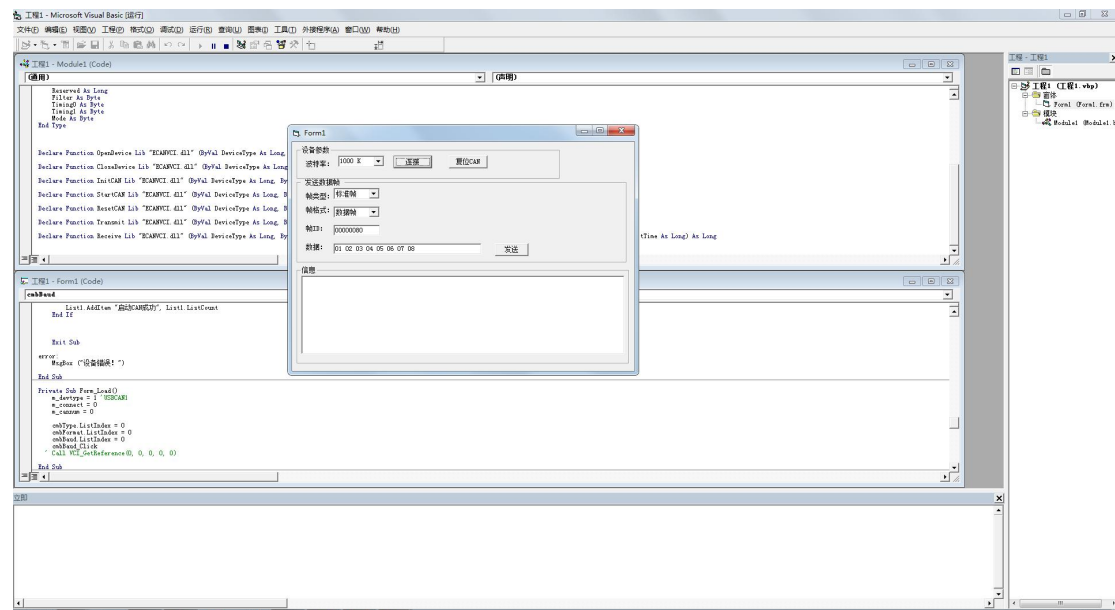
2. 工程文件介绍

Form1 为界面相关程序

Module1 为动态库加载相关程序



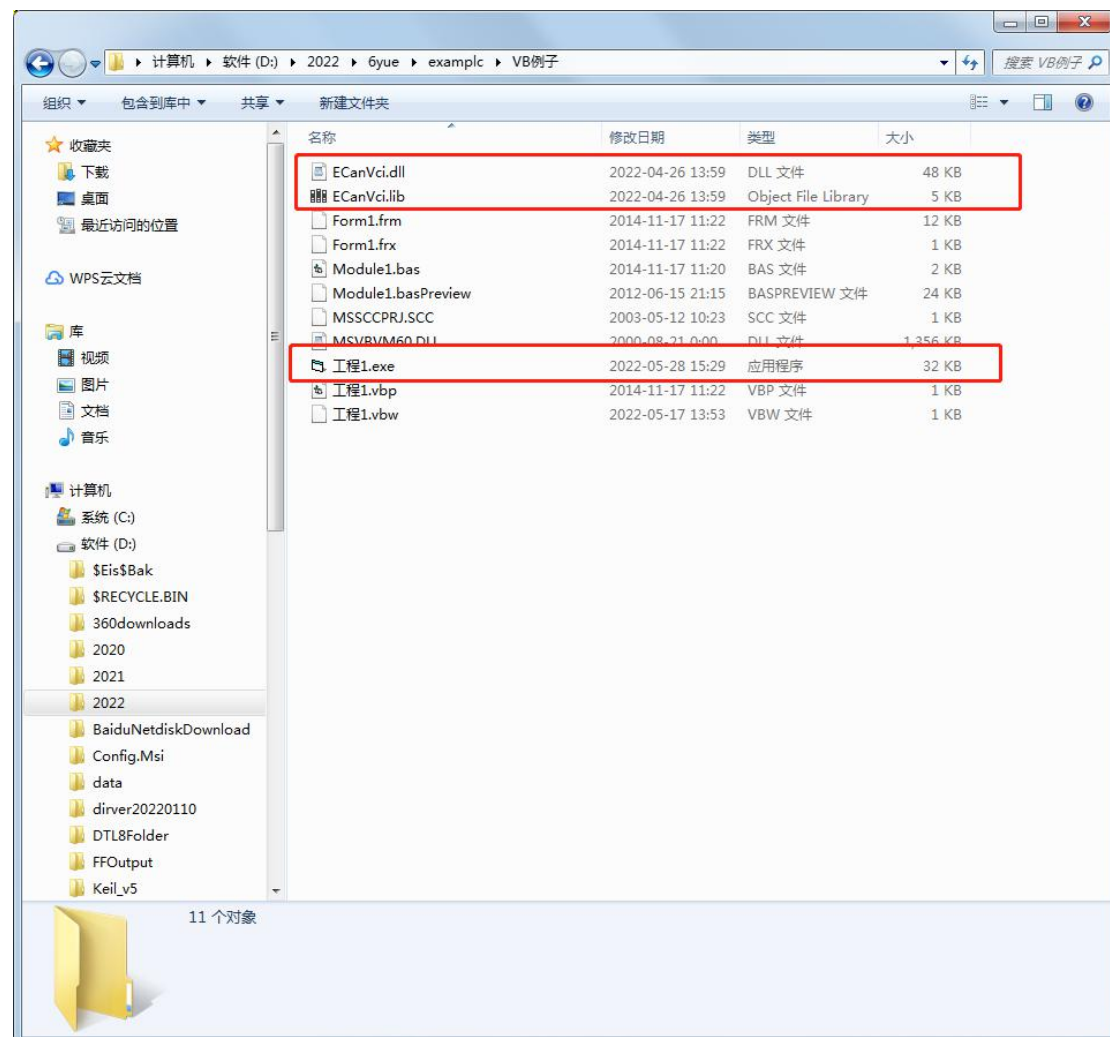
3. 点击运行打开界面效果



VB 库使用方法

1. 把 DLL 和程序生成的 exe 放在一起

VB 动态库存放路径



2. 程序引用动态库方法

```
Declare Function OpenDevice Lib "ECANVCI.dll" (ByVal DeviceType As Long, ByVal DeviceInd As Long, ByVal Reserved As Long) As Long
Declare Function CloseDevice Lib "ECANVCI.dll" (ByVal DeviceType As Long, ByVal DeviceInd As Long) As Long
Declare Function InitCAN Lib "ECANVCI.dll" (ByVal DeviceType As Long, ByVal DeviceInd As Long, ByVal CANInd As Long, ByRef InitConfig As init_config) As Long
Declare Function StartCAN Lib "ECANVCI.dll" (ByVal DeviceType As Long, ByVal DeviceInd As Long, ByVal CANInd As Long) As Long
Declare Function ResetCAN Lib "ECANVCI.dll" (ByVal DeviceType As Long, ByVal DeviceInd As Long, ByVal CANInd As Long) As Long
Declare Function Transmit Lib "ECANVCI.dll" (ByVal DeviceType As Long, ByVal DeviceInd As Long, ByVal CANInd As Long, ByRef Send As CAN_OBJ, ByVal length As Long) As Long
Declare Function Receive Lib "ECANVCI.dll" (ByVal DeviceType As Long, ByVal DeviceInd As Long, ByVal CANInd As Long, ByRef Receive As CAN_OBJ, ByVal length As Long, ByVal WaitTime As Long) As Long
```